

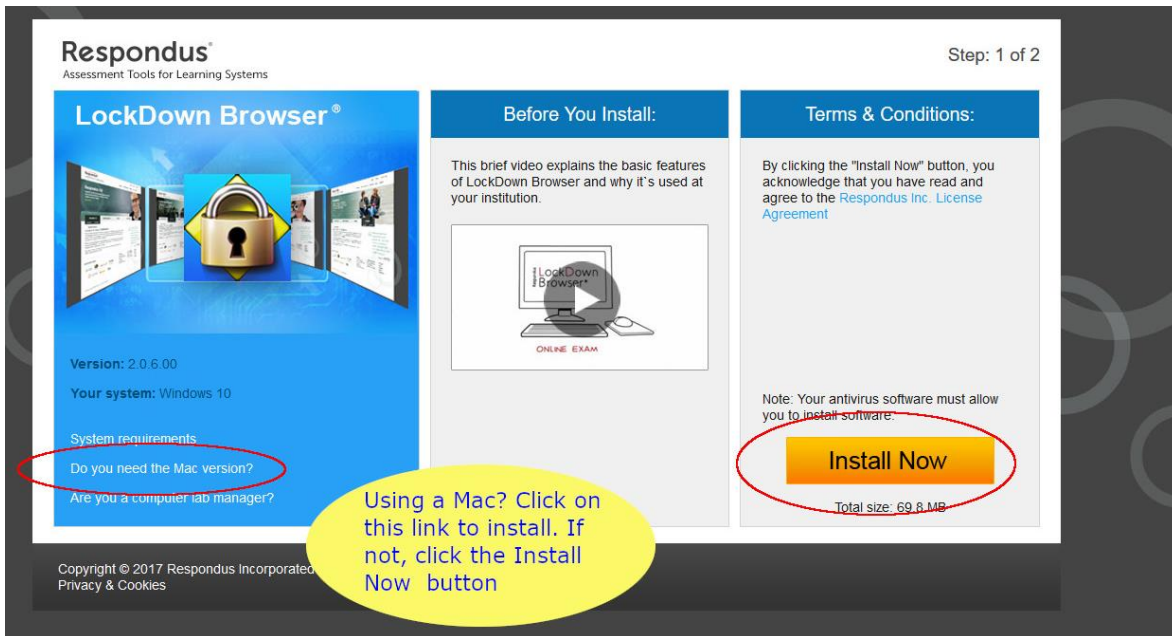
In this course we will be taking online exams in the classroom or lab through Moodle using your laptops (PC or Mac). Lockdown Browser will NOT WORK with Chromebooks. These instructions are written for the Firefox browser

To prepare for this you need to download LockDown Browser onto your laptop with the link below.

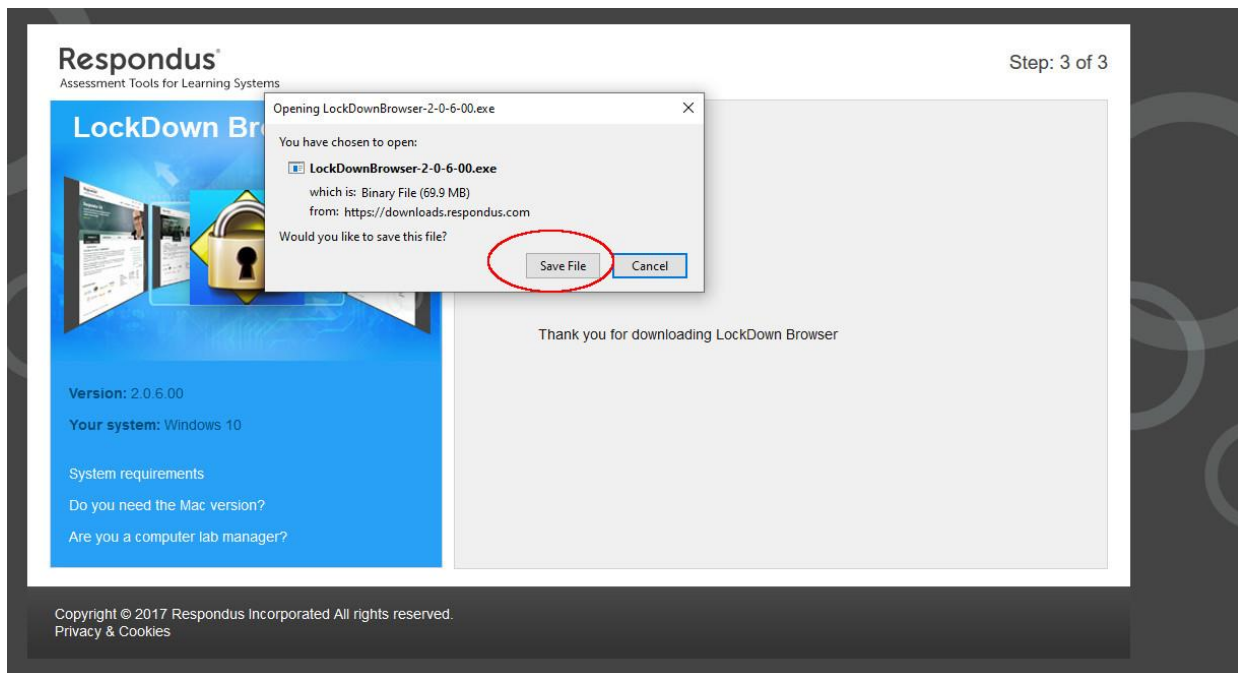
1. Download the browser at <http://www.respondus.com/lockdown/download.php?id=418848069>

You must download through this link as it is unique for Hanover College.

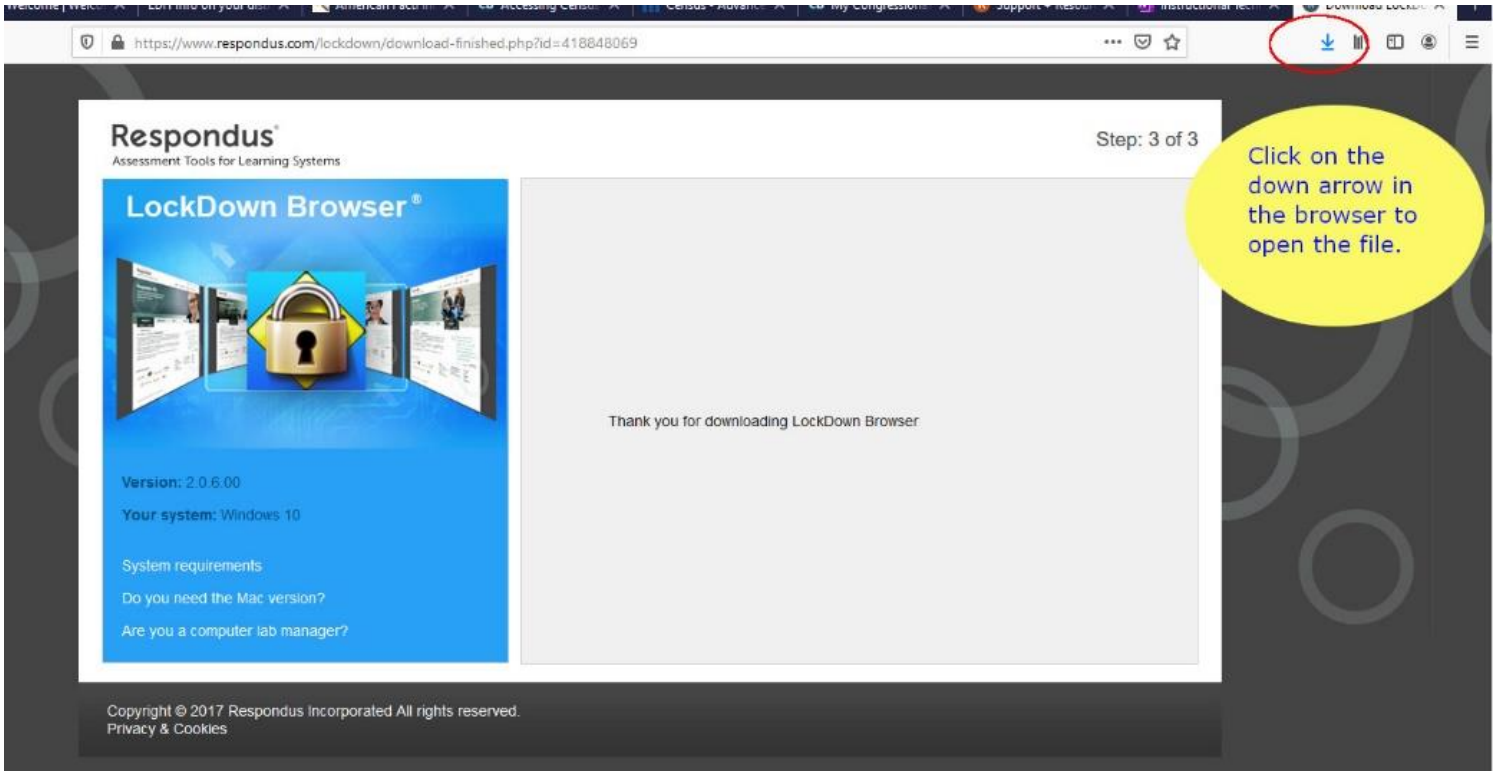
If you are using a Mac, click on the link to the left of the screen.
It will change the installation from the Windows version to the Mac version.
After doing so, when you click Install Now, you will get the Mac version of the software.



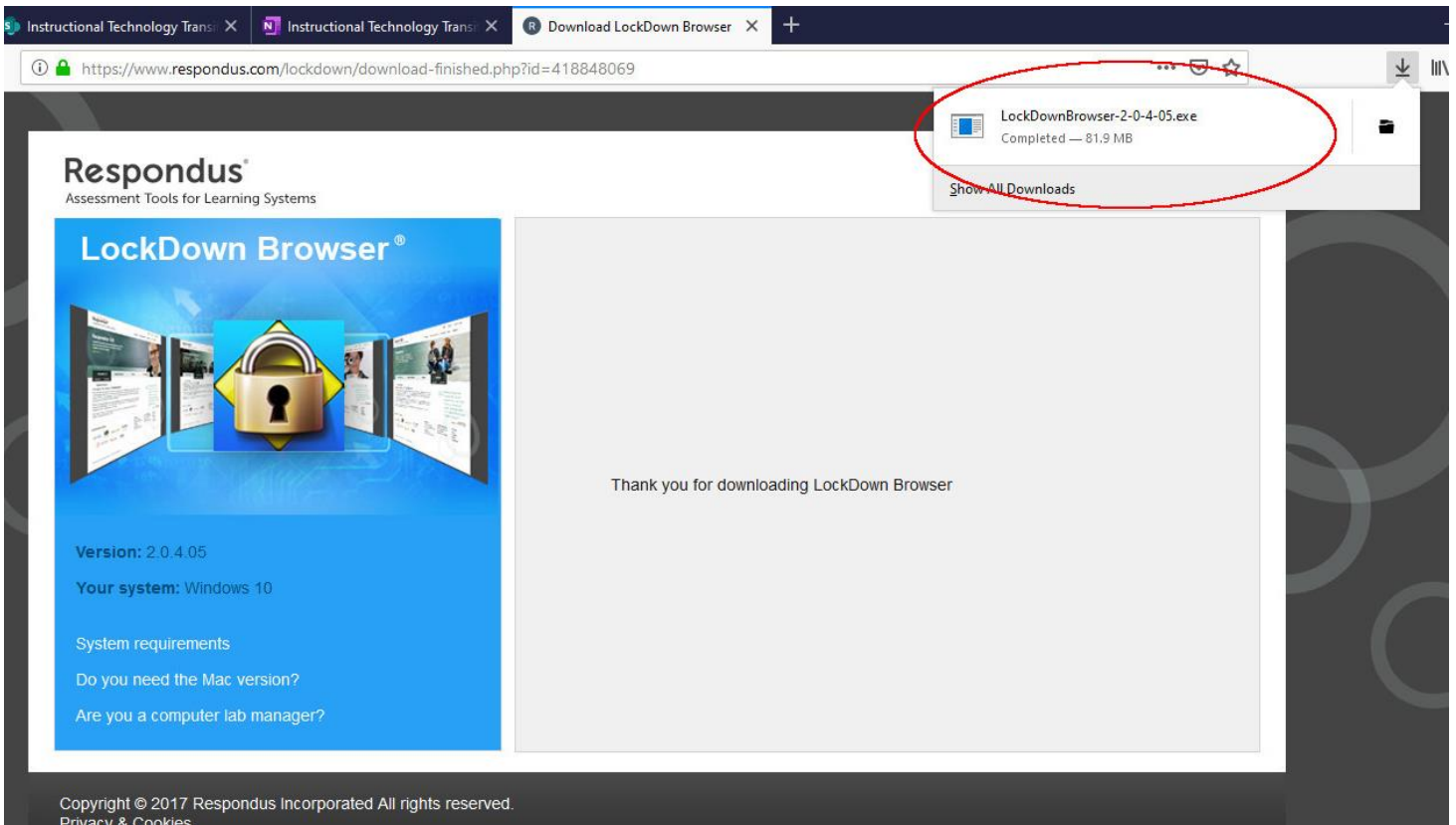
2. Click Save File on the popup for the Lockdown Browser



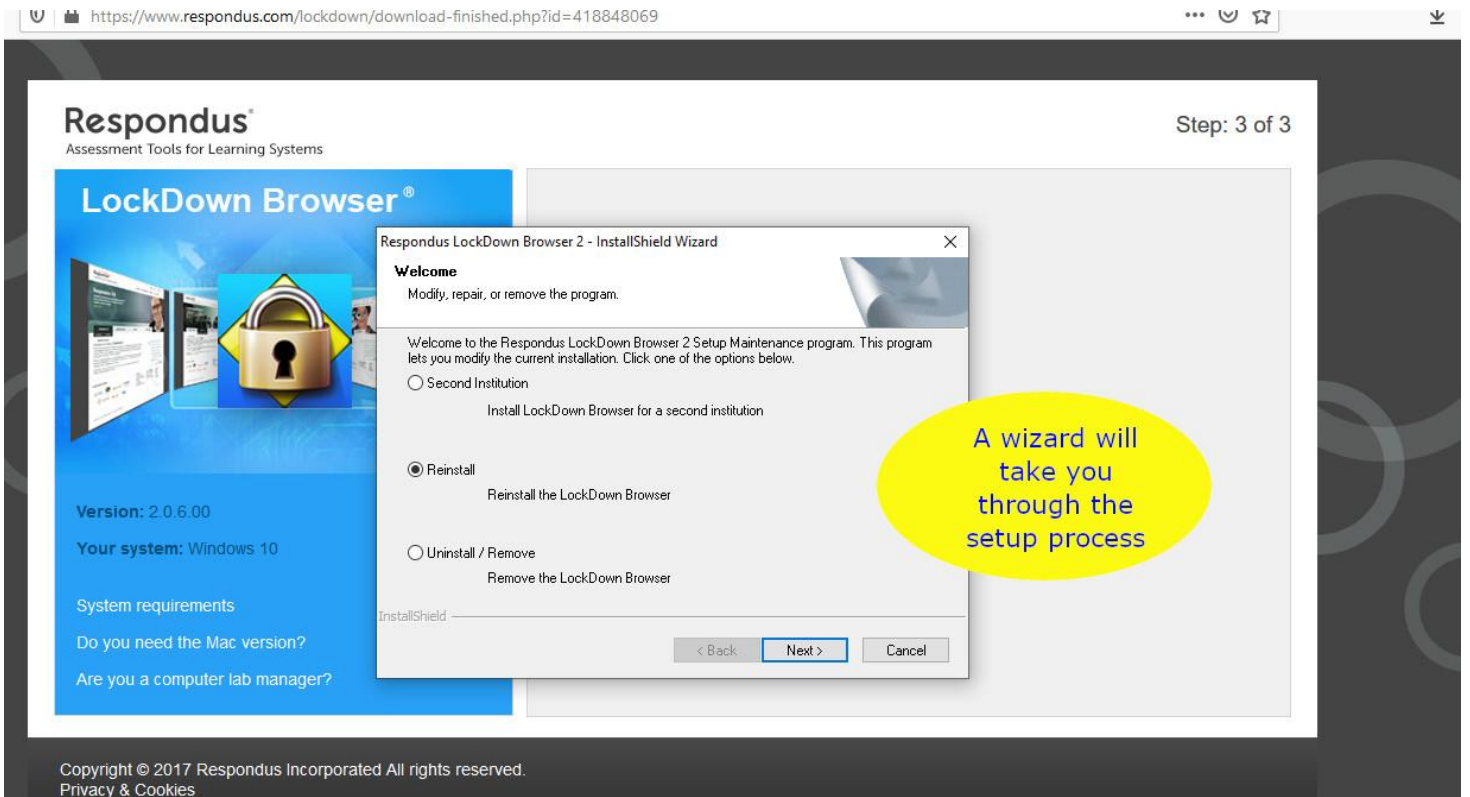
3. Click on the download arrow icon in the upper right.



4. Click on the icon that appears to download the browser.



5. A wizard appears that will walk you through the rest of the installation steps.

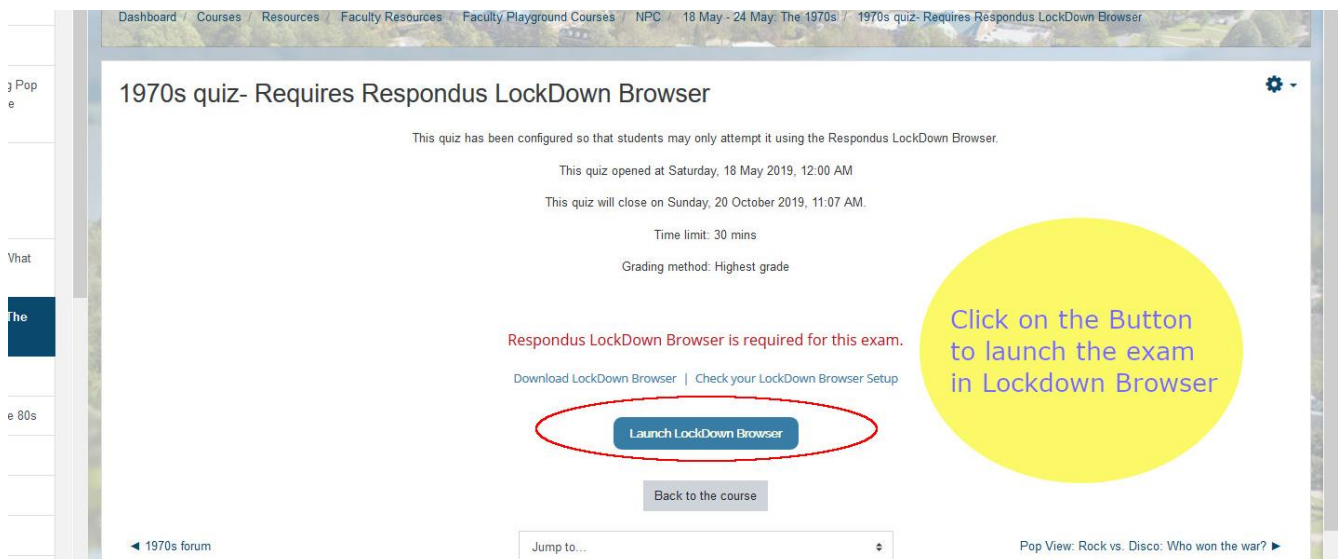


6. Using the browser after you've installed it.

Once the browser is installed, it will activate when you take a Quiz or Test in Moodle that has been set up by your instructor to use the LockDown Browser.

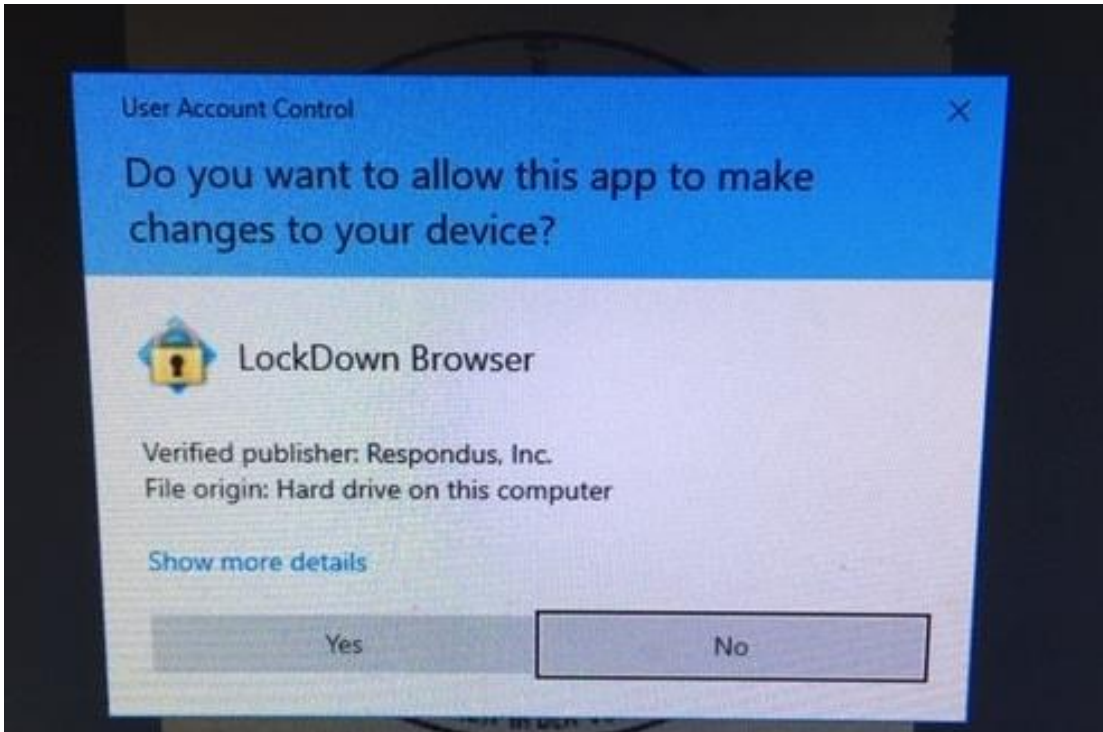
All you have to do is navigate to the Quiz or Test on the Moodle page and click on the link to enter the quiz.

This is what you'll see. Click on the blue button to launch the browser and take your test.



7. You will get this screen:

Click Yes

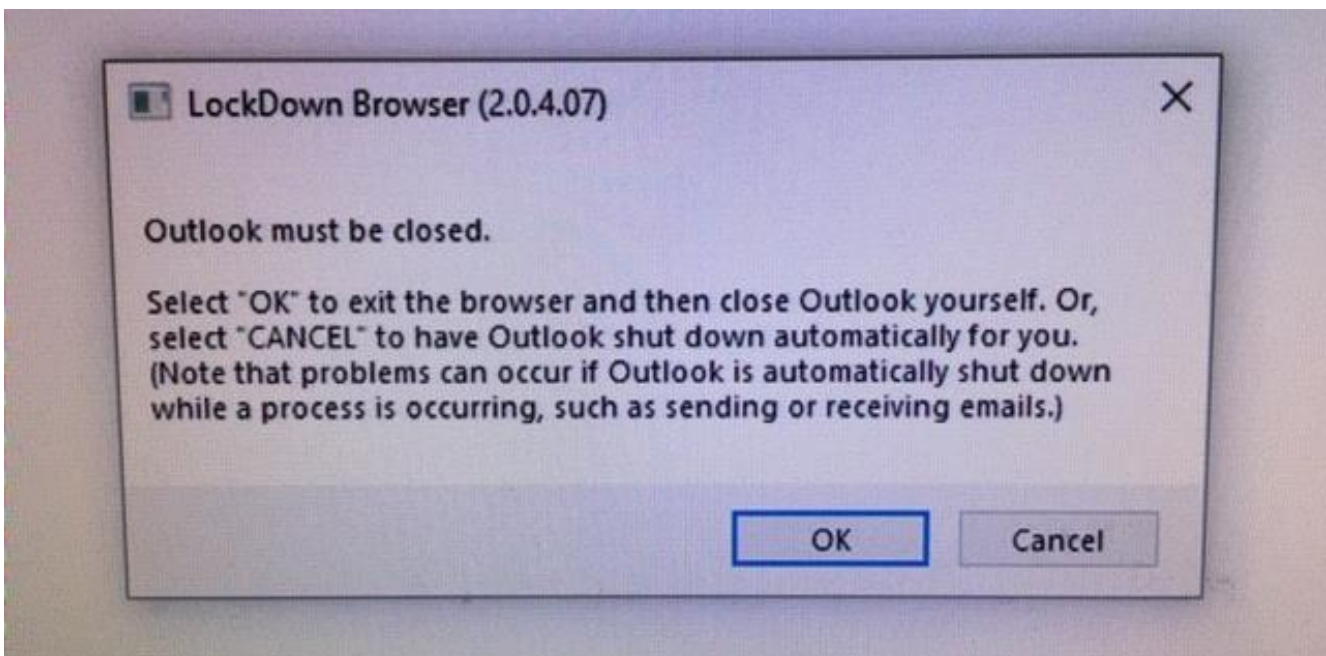


8. You will get this poorly worded popup.

Click Cancel and it automatically closes out all of your screens and takes you into the test or quiz.

Click OK if you want to close everything yourself.

Either way, you want to close out everything - other software, other browsers - before continuing to your test.



9. Now it's show time.

Click start quiz. Good Luck !!

